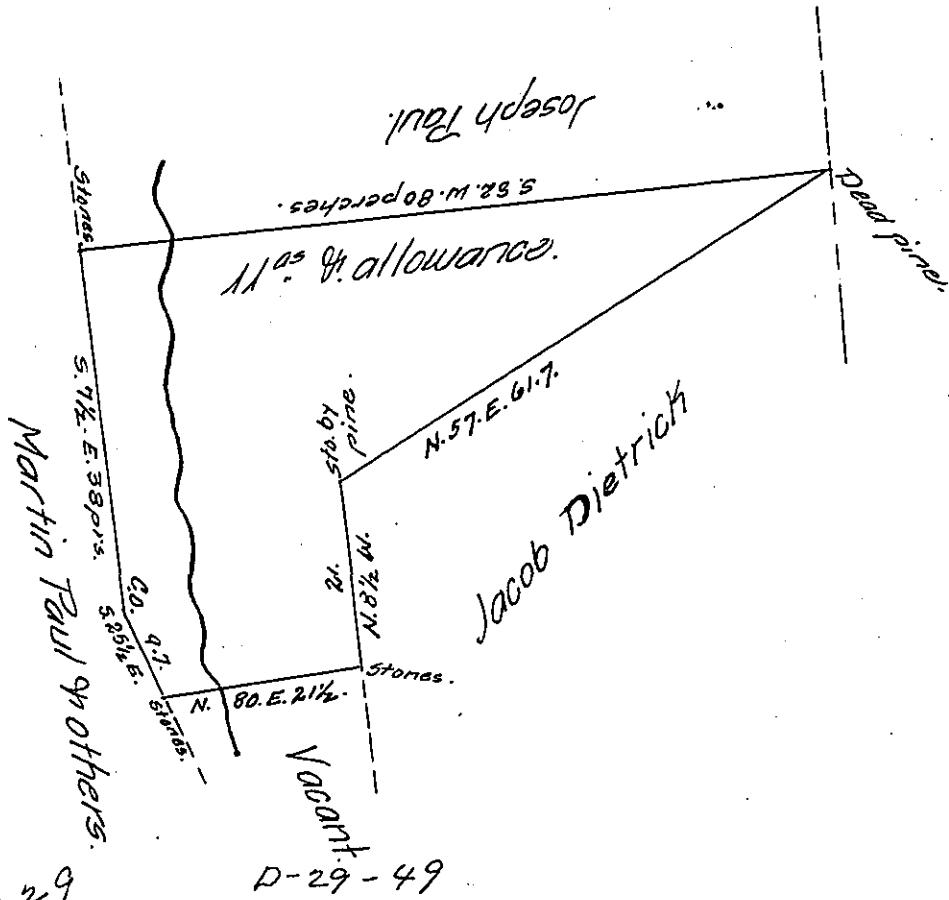


C-197-42

C-174 239

C 174 229



Surveyed April 23<sup>d</sup> 1842. for Charles White the above described tract of land, Situate in Millin township Dauphin County, on the North Side of Berrys Mountain, Containing Eleven acres and the Usual Allowance of 16 per centum for Roads &c on a Warrant granted to the Said Charles White, dated the 18<sup>th</sup> day of April A.D. 1842.

per Joel B. Ferree D.S.

To Jacob Gallade Esq<sup>r</sup>  
S. G. of Penn<sup>a</sup>

IN TESTIMONY that the above is a copy of the original remaining on file in the Department of Internal Affairs of Pennsylvania, made conformably to an Act of Assembly approved the 16th day of February, 1833, I have hereunto set my Hand and caused the Seal of said Department to be affixed at Harrisburg, this twenty-second day of JULY, 1907.

*Henry Howell*  
Secretary of Internal Affairs.